

# MasterCraft

## SERVICE ADVISORY

No. 2007.SEP24.SA-016

SUBJECT: Ballast System Winterizing

MODEL: All 2008 models

**CONDITION:** *The instructions for the Ballast System winterizing procedure in the 2008 Owners Manual appear to be too generic and incomplete. (The photo is correct in that anti-freeze is added via a ballast vent thru-hull fixture.) However, the steps need to be clarified and shared with any boat owner who chooses to do his/her own winterizing and is not able to follow the instructions.*

### **CORRECTION:**

*This process may require two people to complete.*

*Step 1:* The ballast system is always supposed to be emptied following on-the-water usage. **The boat should never be towed with water in the ballast system.** However, prior to winterizing, the ballast EMP-TY switch should be activated *momentarily* to be sure that all water has been cleared out of the system.

*Step 2:* Place a catch pan on the floor below the ballast intake-empty thru-hull fixture.

*Step 3:* Insert a flexible hose (preferably clear so you can see the anti-freeze going in) or a funnel with a rubber hose attached or a 45-degree funnel into a ballast vent. See the attached schematics to determine where the ballast intake is located on your particular boat, as this varies from model to model. **NOTE: You will need to repeat this procedure for ALL tanks on each boat.**



# MasterCraft

## SERVICE ADVISORY

No. 2007.SEP24.SA-016

(Page 2)

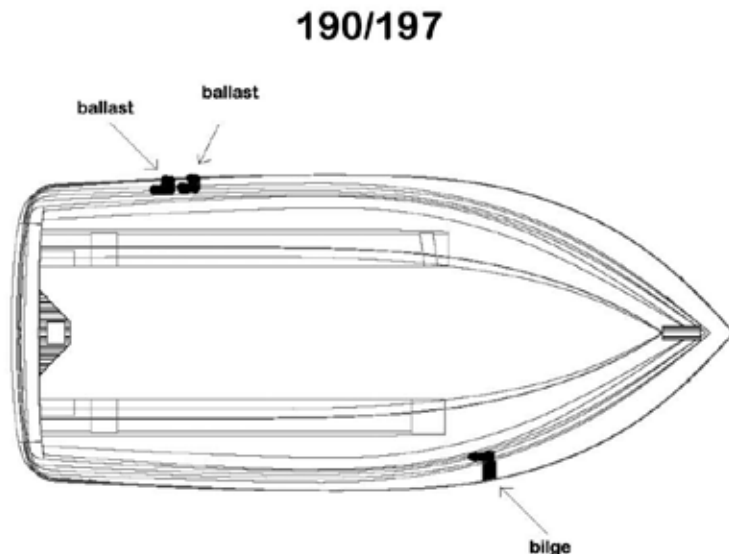
SUBJECT: Ballast System Winterizing

MODEL: All 2008 models

*Step 4:* Turn the ballast switch to EMPTY on the appropriate tank and begin pouring a non-toxic, RV-type anti-freeze in. The pump will pull the anti-freeze into the system, bringing it into the pump and out the intake-empty thru-hull fixture.

*Step 5:* Watch or have someone watch to determine when the anti-freeze has moved through the system and is coming back through on the underside of the hull. This should occur at about one-half gallon of anti-freeze. Note that it is not necessary to fill all the tanks with anti-freeze. Approximately one-half gallon is sufficient to keep the pumps and lines from damage due to freezing conditions. Also, be sure that the fluid coming through the system and out the EMPTY fixture is anti-freeze and NOT water.

*Step 6:* Repeat these steps if your model has more than one tank. See the accompanying diagrams to determine whether there are more. The indication of “ballast” on these drawings is the approximate location of the vent. Each vent is attached to a tank that will need to be winterized.



# **MasterCraft**

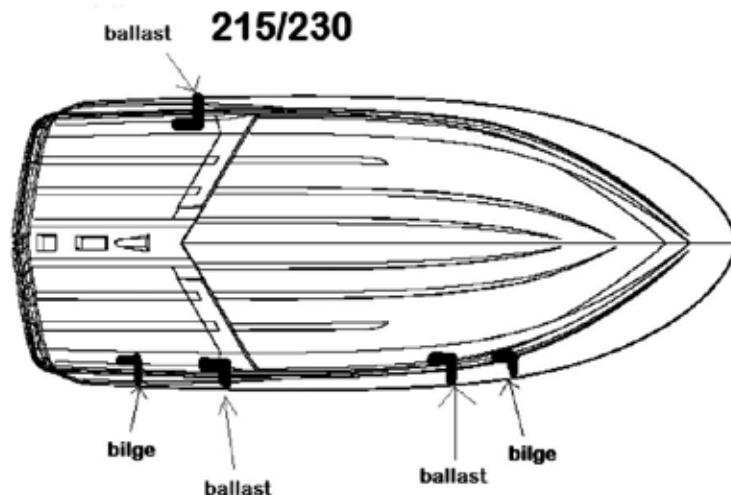
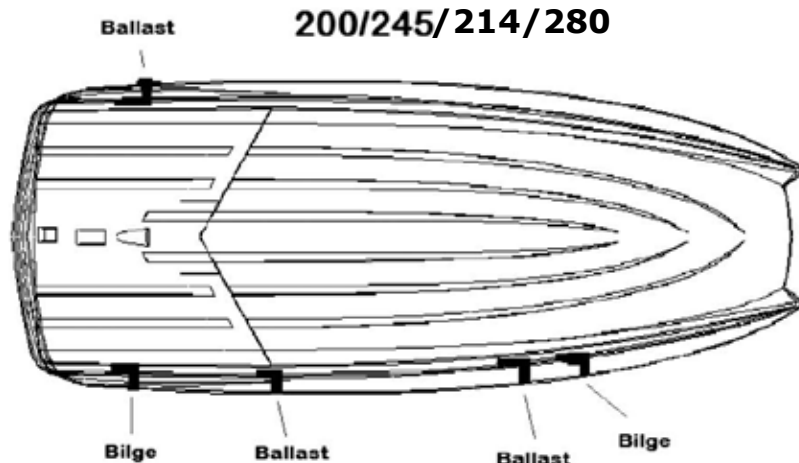
## **SERVICE ADVISORY**

No. 2007.SEP24.SA-016

(Page 3)

SUBJECT: Ballast System Winterizing

MODEL: All 2008 models



# **MasterCraft**

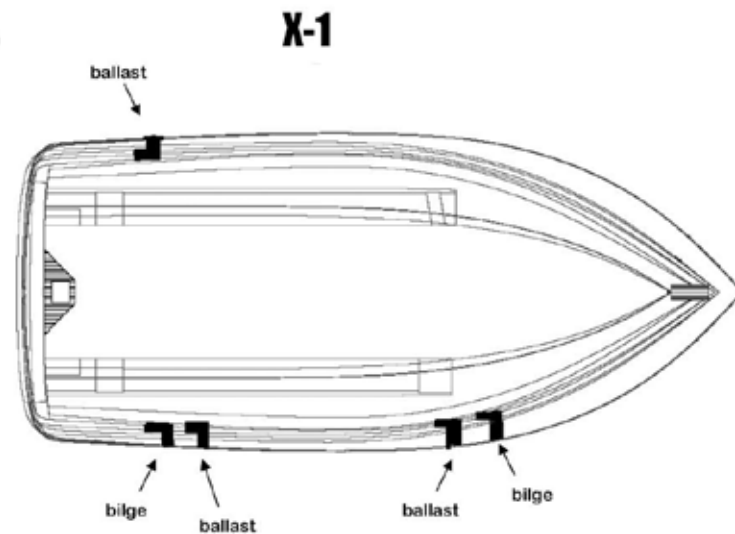
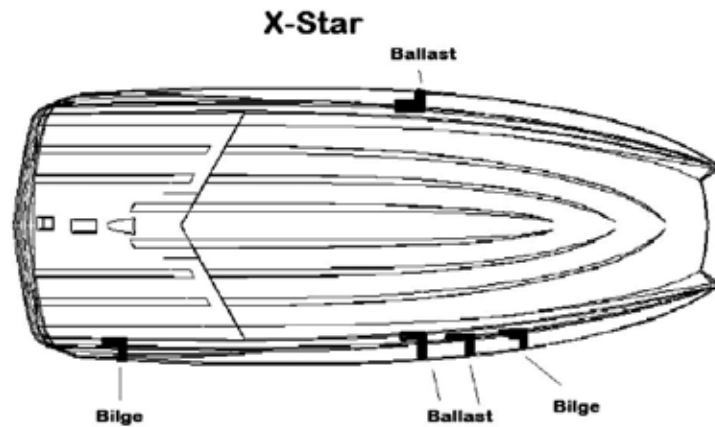
## **SERVICE ADVISORY**

No. 2007.SEP24.SA-016

(Page 4)

SUBJECT: Ballast System Winterizing

MODEL: All 2008 models



# **MasterCraft**

## **SERVICE ADVISORY**

No. 2007.SEP24.SA-016

(Page 5)

SUBJECT: Ballast System Winterizing

MODEL: All 2008 models

### **CSX 220 Thru hull Layout**

